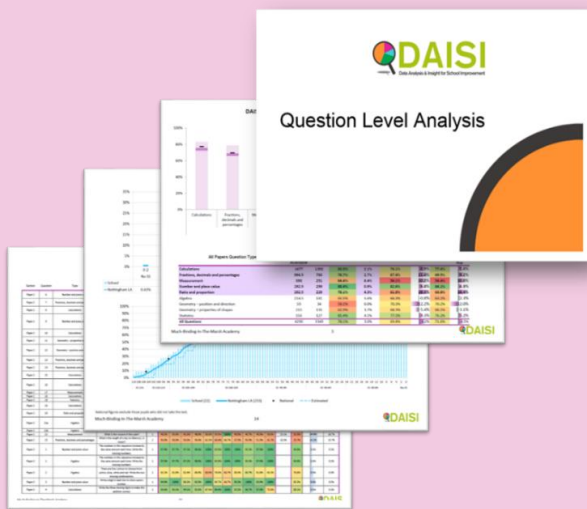


QLA – KS2 SATs Analysis (Primary)

Here at the DAISI Service our mission is to help schools manage, use and understand data more effectively and save you precious time that could be spent working with your pupils.

For less than the equivalent cost of just one day of a primary head teacher's time you can enjoy totally stress free analysis of the 2018 KS2 SATs tests for your Year 6 cohort and receive 3 powerful question level analysis subject reports for Maths, Reading and Grammar Punctuation and Spelling, plus a 26-page summary report.



Each Subject report shows:

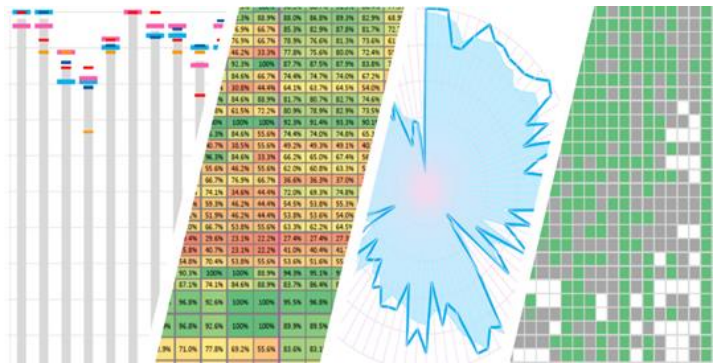
- overall test performance
- outcomes by groups including gender, disadvantaged, SEN, EAL and prior attainment)
- question summary results
- question types results
- question performance by groups
- question performance per pupil

Benefits for you

- **Not a single keystroke of data inputting** for schools!
- **Time saving – ready-made analysis** to inform curriculum and improvement planning.
- **Reports ready to share** with Assessment Co-ordinators, Senior Leaders, Subject Leaders, School Improvement Partners, Governors and Ofsted.
- Single page views with **clear graphs and charts, simple tables, colour coding and benchmarking.**
- Immediately **shows areas that are secure and the gaps to focus on.**
- **Each question cross-referenced;** domain references/mark scheme/test framework, showing which subject area each question is assessing.
- **Forensic analysis** to focus teaching on areas of need.
- **Evidence based discussion** for implications for the next academic year and what intervention strategies are needed.
- **Good evidence for Ofsted.**
- **Share reports** with other schools; identify common trends/needs, commission CPD support and identify successful curricula interventions.
- Additional **overarching Multi Academy Trust Strategic Report** available.

DAISI QLA

- is **powerful**
- is clear and **easy to read**
- provides an **evidence base** to focus intervention
- **prepares for inspection**
- provides a **collaborative means** of support and challenge
- **allows you to start the new academic year in control**



Value for Money and Fast Delivery

- All 3 maths papers, reading paper and 2 GPS papers analysed and condensed into 3 subject reports, together with a 26-page summary report.
- **Cost £249 per school/academy**
- Your reports will be produced within days from receipt of order and provision of data.
- Reports sent via secure email.

"What a fabulous job the Data, Analysis and Insight team has done for us once again!

With an accurate and critical understanding for schools the team has devised a simple but effective tool for analysis of internal data at question level for our school.

These tools will support us to enable class teachers, subject leaders, senior leaders and governors to accurately evaluate their areas of responsibility and plan for school improvements over the coming 12 months.

We will certainly be using the service again next year."

Sarah and Pat Fielding, Headteachers,
Haydn Primary School
Nottingham

What have schools said?

"You have just saved me fifteen hours of work!"
Deborah Weaver, Head, Cantrell Primary School

"Much appreciated. Had a quick skim read and it looks great, will save huge amounts of time and support Governor and SLT knowledge. Thanks to your team!"
Jo Keely, Headteacher, Westglade Primary School

"DAISI QLA is a wonderful product. It has not only saved me a lot of time but is clear and easy to understand. It is a resource I will share with our governors. I have also recommended DAISI QLA to other Head Teachers."
Headteacher, Butterwick Pinchbeck's CE Primary School

Ordering

Ordering is easy – [complete our online order form](#). You then need to input your pupils' results into our spreadsheet and send this to us. You will receive full instructions and a link to our spreadsheet with your order acknowledgement. **Once that is done correctly, we do the rest.**

Don't forget, if your Year 6 cohort has 15 pupils or fewer, we have a special discount!