



Understanding Your School's Data

A guide for Governors, NQTs and Parents

Absence & Exclusions

www.DAISI.education

Absence

Attendance

All schools meet for at least 380 sessions, one in the morning and one in the afternoon.

In each session, schools record whether pupils are:

- Present,
- Attending an approved education activity,
- Unable to attend due to exceptional circumstances, or
- Absent.

If a pupil is absent, schools need to ascertain the reason and ensure that proper safeguarding action is taken if needed.

Reasons that a pupil can be absent include:

Authorised absence, due to...

- Medical/dental appointments,
- Religious observances,
- Study leave,
- Gypsy, Roma and Traveller absence.

Unauthorised absence, due to...

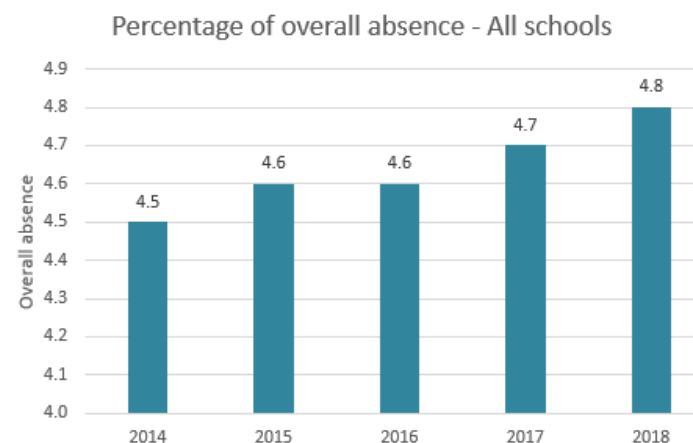
- Family holiday,
- Late,
- Not yet known, and
- Other.

Overall Absence

Three times a year, the DfE publishes data for absence and persistent absence.

A pupil's absence is calculated as the number of sessions where a pupil is absent, divided by the number of sessions available to that pupil.

A school's absence rate is the average of the absence rates of all pupils who are of compulsory school age (aged between 5 and 15 as of the previous 31 August).

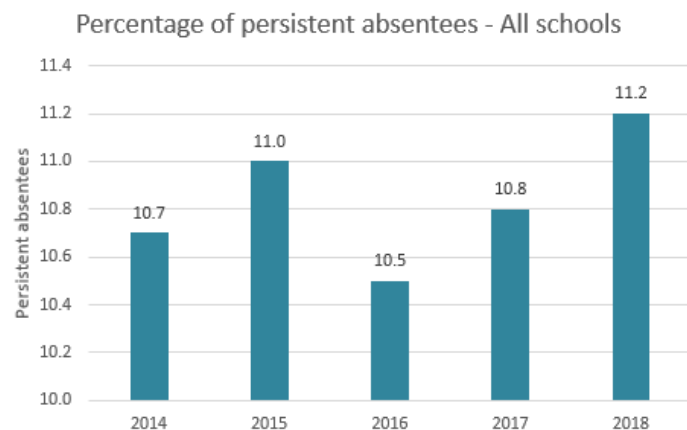


Overall absence levels (Primary 4%, Secondary 5.5%),

Persistent Absence

A pupil is persistently absent if that pupil misses 10% or more of all available sessions.

A school's persistent absence rate is the total number of persistently absent pupils of compulsory school age, divided by the number of compulsory school age pupils in the school. For this calculation, it doesn't matter whether a pupil missed 10% of all available sessions or 30%; that pupil has the same weighting.



Persistent absence levels (Primary 9%, Secondary 11%).

Other Measures

The DfE also publishes other measures for schools, Local Authorities (LA) and Nationally.

These are shown below with approximate National averages:

- Authorised absence levels (Primary 3%, Secondary 4%),
- Unauthorised absence levels (Primary 1%, Secondary 1.5%),
- Absence levels by reason (e.g. Illness 2.5%),

The DfE publishes their Absence analysis on [the public gov.uk website](https://www.gov.uk):

- For the autumn term in May,
- For the autumn and spring terms in October, and
- For the full academic year in March.

Any small figures in an individual school's statistics are suppressed on the public gov.uk website.

Ofsted's Inspection Data Summary Report (IDSR)

In the IDSR, in terms of absence:

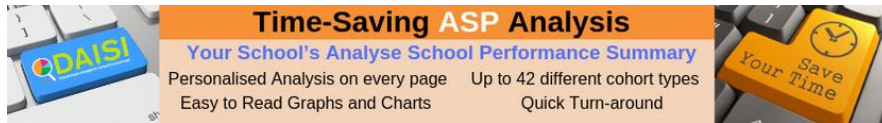
- Ofsted compare the overall rate of absence with the National average for schools which have a similar level of deprivation as measured by IDACI (Income Deprivation Affecting Children Index).
- Ofsted comment when boys, girls, FSM (Free school meals), EAL (English as an additional language) and SEN (special educational needs) pupils are 10% above the cohort National average.
- Ofsted also comment when the overall absence rates is in the highest or lowest 10% of all schools for at least 2 years.

Analyse School Performance (ASP)

The ASP service and Ofsted's IDSR, which is only accessible by schools, LAs and Ofsted, is updated with the autumn and spring term absence analysis in December, and with the full academic year in May.

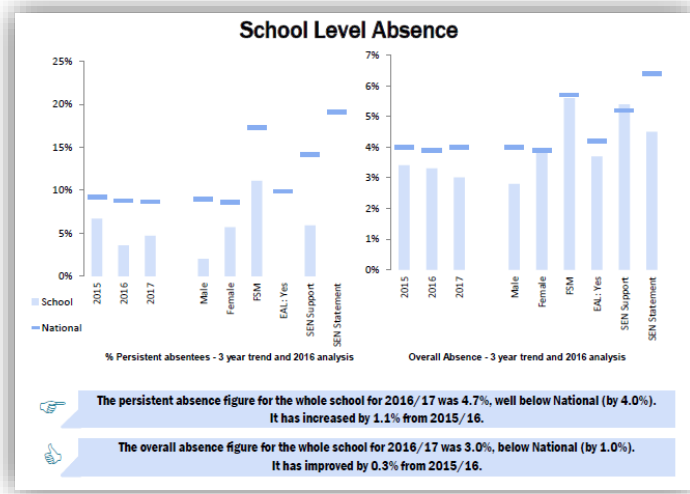
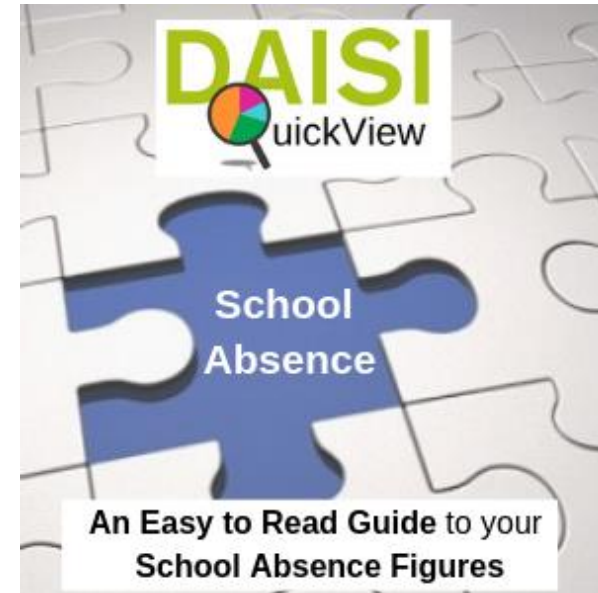
[Our ASaP report](#), available at the same time, is an analysis of the ASP data, with easy-to-read statements in plain English and graphs.

It also enables you to look at individual cohort types in detail.



Time-Saving ASP Analysis
Your School's Analyse School Performance Summary
Personalised Analysis on every page Up to 42 different cohort types
Easy to Read Graphs and Charts Quick Turn-around

Included is a full analysis of your school absence figures

DAISI QuickView
School Absence
An Easy to Read Guide to your School Absence Figures

[Our FREE School Absence QuickView](#) contains a quick summary of a school's figures, together with graphs and high-level analysis.

**Available for every school in the country
Primary or Secondary**

Click [HERE](#) for a Preview



Full Enhanced Absence Quickview available for all schools when you sign up to our PREMIUM Mailing List.

[Click here for more details](#)

Exclusions

The DfE publishes per-school details of the number of pupils excluded in each calendar year.

In this context, "exclusions" does not include lunch-time exclusions.

Exclusion Reasons

Pupils are either fixed-term excluded (**suspensions**) or are permanently excluded (**expulsions**) principally for the following reasons:

- Persistent disruptive behaviour,
- Physical assault against an adult,
- Physical assault against a pupil,
- Verbal assault against an adult, and
- Other.

Additional less-common reasons include:

- Bullying,
- Damage,
- Drug and alcohol related,
- Racist abuse,
- Sexual misconduct,
- Theft, and
- Verbal assault against a pupil.

Exclusion Measures

The following measures are released by the DfE [on the gov.uk website](#) in July/August:

- Number of permanent exclusions (**expulsions**).
- Number of fixed period exclusions (**suspensions**).
- Number of pupils with one or more fixed period exclusions.

In addition, the ASP service and Ofsted's IDSR, which is accessible by schools, LA and Ofsted and updated in November, has the additional measure:

- Number of pupils with two or more fixed period exclusions (**"Repeat" suspensions**).

**The data that is released is a year in arrears
(e.g. the 2017/18 data will be released in July/August 2019
on the gov.uk website and in November 2019 in the ASP and ISDR).**

These measures are released as:

- the number of exclusions, and
- a percentage, which is the number of exclusions divided by the number of pupils in January.

Exclusion in Ofsted's IDSR

In the IDSR, Ofsted looks at the following:

- a comparison of the total fixed-term exclusions compared with the national average for schools with a similar level of deprivation (as measured by IDACI).
- whether all the fixed-term exclusions are for specific groups (gender, FSM, EAL or SEN).
- whether the rate of fixed-term exclusions was at least 10% above the national comparator.
- whether the rate of total or repeat fixed was above the national average for the last 3 years.

[Our online ASP and IDSR training courses](#) also include several videos about interpreting absence and exclusion data, together with more details about Ofsted's interpretation of these figures, and Points to Ponder.

ASP Explained Primary 2018

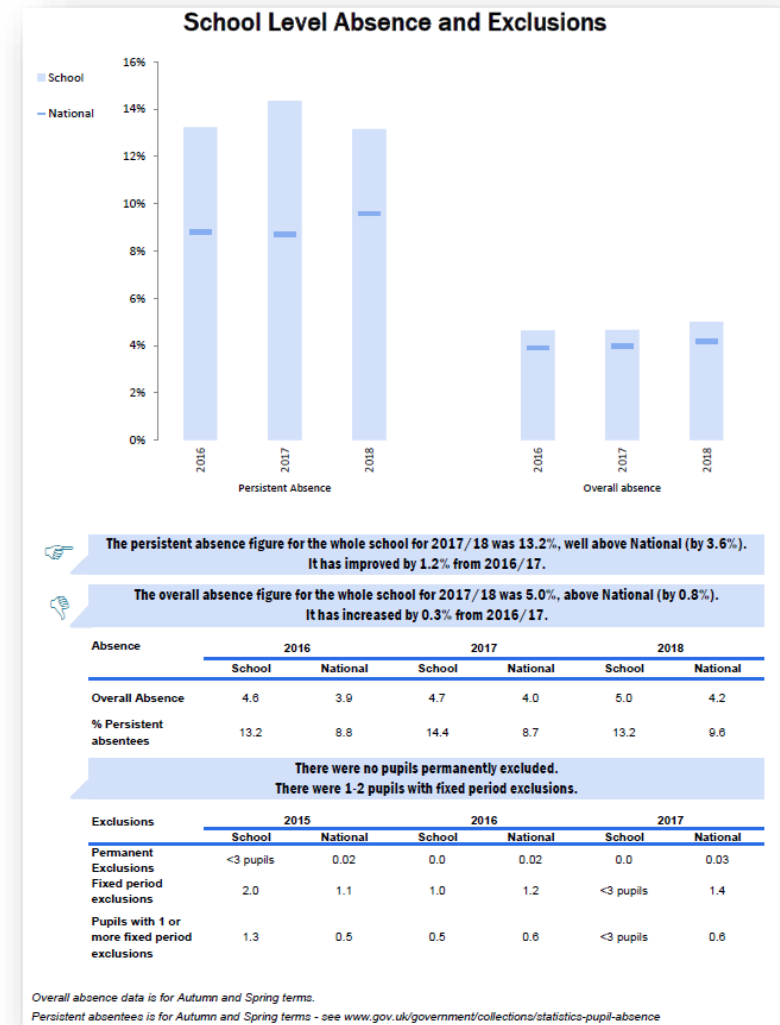
ONLINE VIDEO TRAINING

OFSTED IDSR Explained Primary 2018

- 1½-2 hours training
- One single purchase
- Includes free pdf download of "Points to Ponder"

- Use as often as you like
- Great for Governors
- Consider the questions Ofsted will ask about your School Data

- Learn at your Pace
- Fully Updated



[Our ASaP report](#) enables you to see your absence and exclusion data in a clear table format including direct comparisons with national average.

Thank you for reading and downloading this pdf booklet.

For more DAISI Data Guides – Click [HERE](#)



We help you make sense of your school **data**
giving you clear **analysis** and **insight** to aid your **school improvement**

Visit our [Website](#) for more ways that we can help you on your data journey or [click on the pictures below](#)

Includes
Absence and
Exclusions in
ASP/IDSR

**ONLINE VIDEO
TRAINING**

**ASP Explained
Primary 2018**

**OFSTED IDSR
Explained
Primary 2018**

- 1½-2 hours training
- Fully Updated
- Learn at your Pace
- Great for Governors

Get both courses for one great price

QUICK EASY SIMPLE TIME-SAVING

**DAISI
QuickView**

**School
Absence**

**An Easy to Read Guide to your
School Absence Figures**

ASoP

Your Schools ASP Analysed - ASaP

**Save
Your Time**

Useful Links – Absence/Exclusions

Public gov.uk website – Absence
<https://www.gov.uk/government/collections/statistics-pupil-absence>

Public gov.uk website – Exclusions
<https://www.gov.uk/education/school-discipline-and-exclusions>

For further information on what the DAISI service can do for your school, Academy, LA, Trust or Alliance, please contact us:

Phone: 0115 87 64020

Email: mail@daisi.education

Follow us on Twitter: [@daisi_education](https://twitter.com/daisi_education)

To view our range of products and services, visit our website: www.DAISI.education